

IT-EKX121025B

250 μ A.h MICRO-BATTERY EVALUATION KIT

KEY FEATURES

- USB kit for Windows PC
- Includes a battery with power management
- Precise monitoring of source, battery and load current and voltage
- 10nA-100mA measurement with auto-range
- Metrology without leakage or overshoot
- Up to 10 kHz sampling
- Includes a continuous and a pulse load
- Enables programmable load (PWM)
- Charge/discharge cycling tests
- Test of RTC and Energy harvesting solutions
- Operates with a separate F767ZI (Nucleo) board (not included in the evaluation kit)
- Autotest included

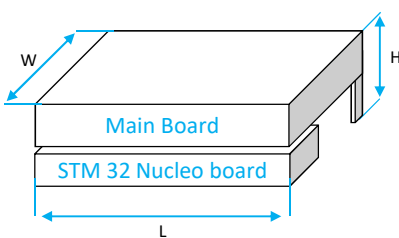


USAGE

- Quick development of micro-powered systems
- Precise assessment of autonomy and micro-current consumption
- Easy fine tuning with numerous plugs for discrete devices
- Long-term monitoring of battery behaviour
- Qualification tests in temperature

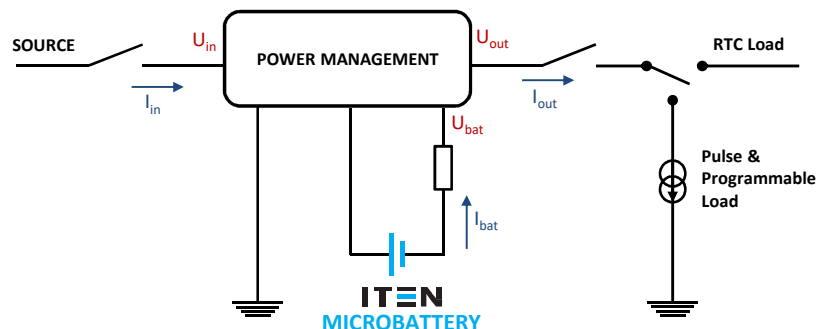
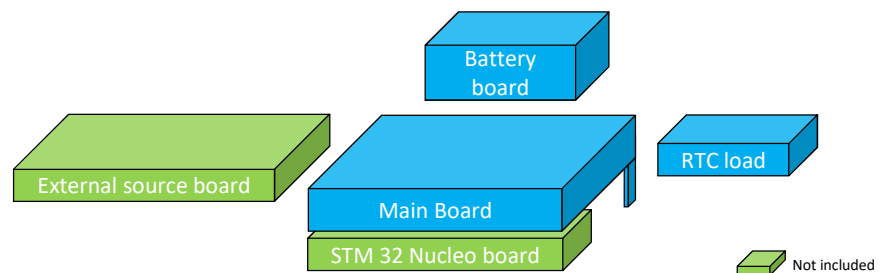
KIT OUTLINE

EVALUATION KIT OUTLINE



Dimensions (mm)

L	W	H
145	125	25



Evaluation Kit line up

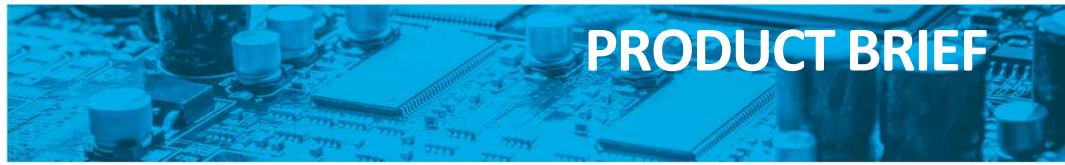
ORDERING CODIFICATION

IT - EKX 12 10 10 A A C A A A

ITEN SA
12, chemin du Jubin
69570 DARDILLY FRANCE
www.iten.com

Sales Office
sales@iten.com

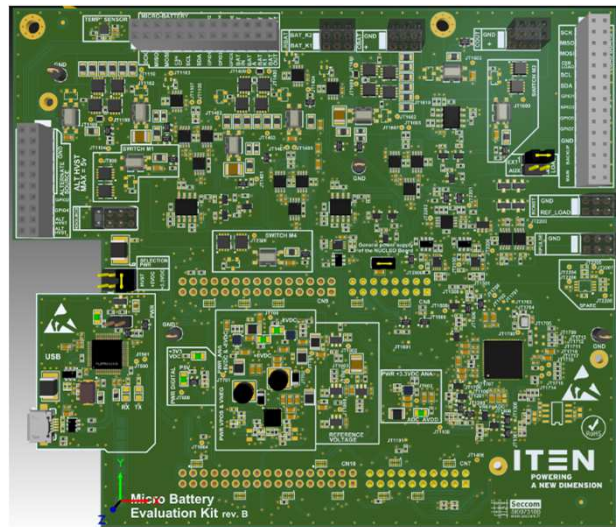
Customer Support
technical.support@iten.com



IT-EKX121025B
250 μ A.h MICRO-BATTERY EVALUATION KIT

TEST SET-UP

- Easily customizable by plugging components on the board
- Enables two battery recharging methods : USB port or external energy harvester
- Discharge through an auxiliary device (e.g. RTC) or emulation of a pulse or a programmable load
- Choice of multiple test conditions (test duration, end of charge voltage, sampling rate, etc.)



MONITORING & POST PROCESSING

- Real time access to currents, voltages and temperature
- Real time setting of a dynamic sampling rate based on time or voltage variation
- Testing duration ranging from seconds to months
- Data files generation using a standard format for an easy Excel post-treatment

